
FOR SALE

92 Lewin Road, London, SW16 6JU



Income Producing Investment

SALE PRICE

£775,000

**Freehold income producing
investment for sale**



0208769 0161

hnfproperty.com

Specialist Advice on all property matters

Description

The property comprises as an attractive period build semi-detached house, now comprising 3 flats over basement, ground, first and second floors. The property is fully let and income producing. Flats are central heated and mainly double glazed. The property is well positioned for public transport facilities and commercial facilities of central Streatham, including major supermarkets.

Location

The property fronts Lewin Road, a very pleasant residential side road just off Streatham High Road. The property has ready access to both Streatham Common and Streatham stations and numerous bus routes. The open spaces of Streatham Common are at the top of the road.

Accommodation & Income

Address	Council Tax	EPC	Income
Flat 1 - A two Bedroom ground floor flat with basement stores	Band B	67 Band D	£1,800 pcm
Flat 2 - A one bedroom slightly split level floor	Band B	73 Band C	£1,475 pcm
Flat 3 - A one bedroom slightly split level floor	Band B	67 Band D	£1,450 pcm
Externally - Front garden / bin store			
Good size rear garden			

92 Lewin Road, London, SW16 6JU

Total Income

The overall income is believed to be **£XXXX per annum exclusive**.

Sale Price

£750,000

Tenure

The property is offered freehold.

Use / Planning

C3 Dwelling Houses

Interested parties should make enquiries of the local authority prior to offer.



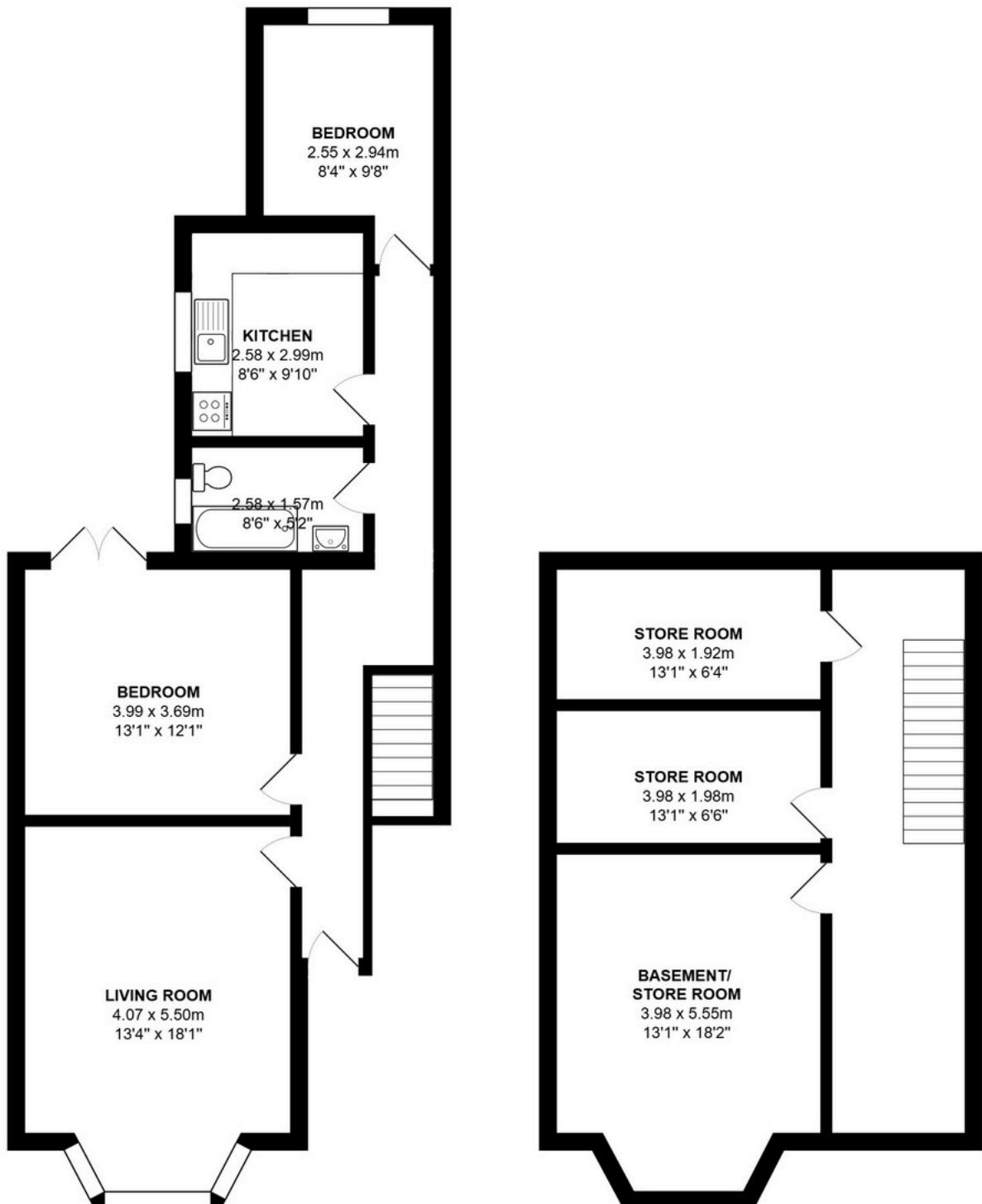
Viewings by prior arrangement.

Call 0208 769 0161

HM Land Registry - Freehold Title Plan



Flat 1 - Floor Plan

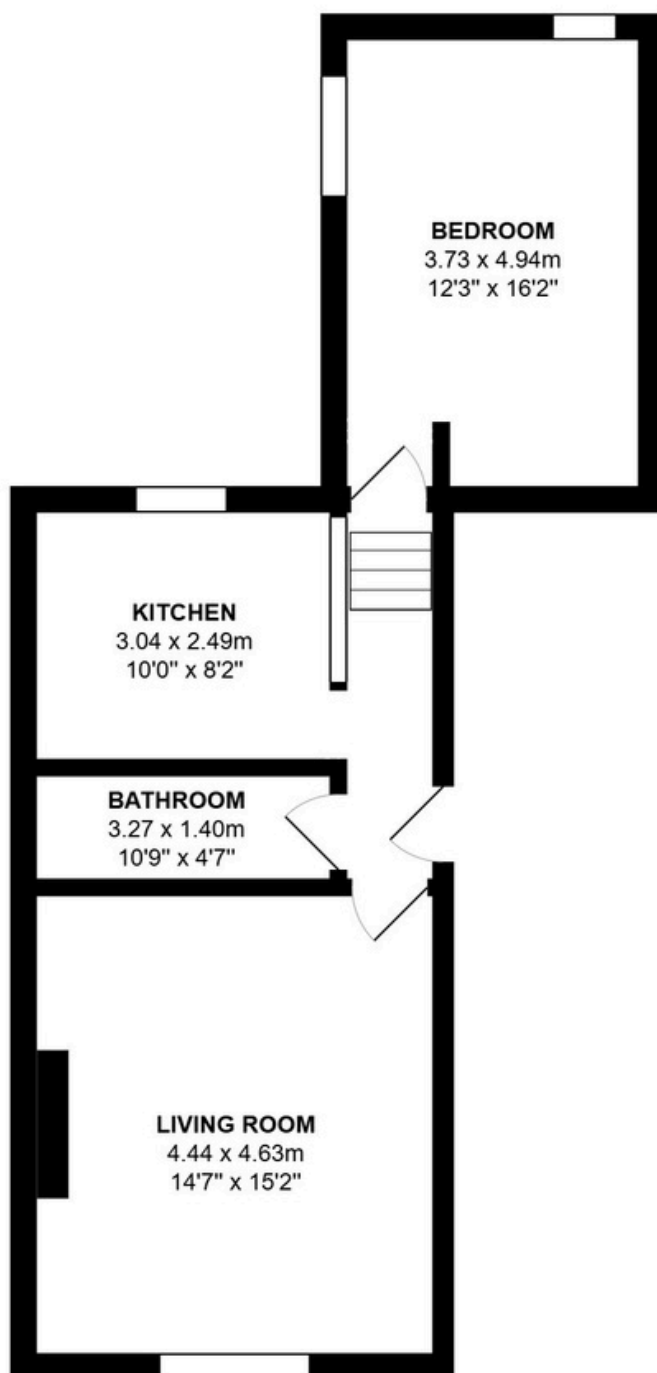


Total Area: 126.9 m² ... 1366 ft²

All measurements are approximate and for display purposes only

Flat 2 - Floor Plan

Flat 2, 92, Lewin Road, London, SW16 6JU

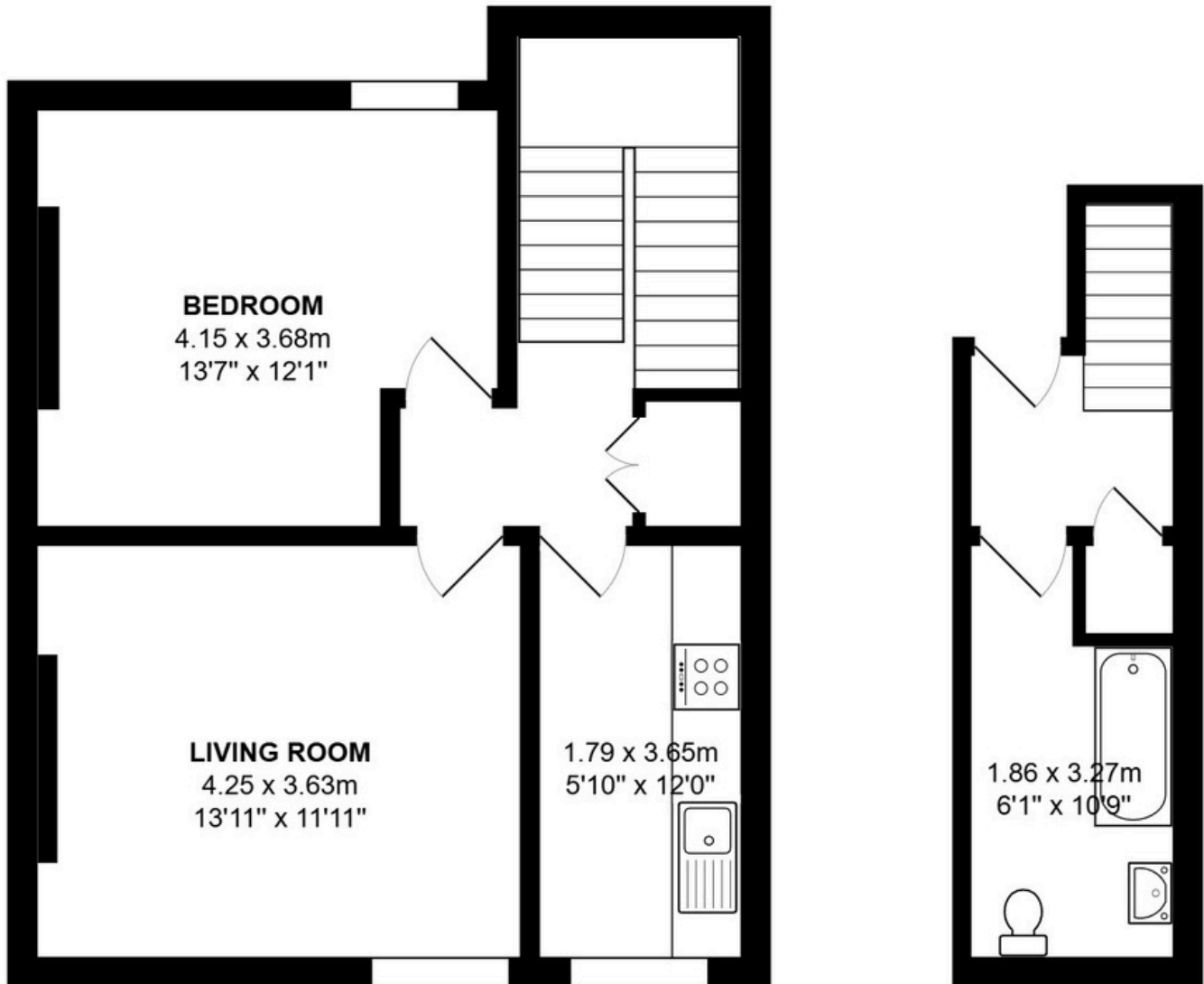


Total Area: 47.5 m² ... 511 ft²

All measurements are approximate and for display purposes only

Flat 3 - Floor Plan

Flat 3, 92, Lewin Road, London, SW16 6JU



Total Area: 58.7 m² ... 631 ft²

All measurements are approximate and for display purposes only

92 Lewin Road, London, SW16 6JU



**Viewings by prior arrangement.
Call 0208 769 0161**





**Viewings by prior arrangement.
Call 0208 769 0161**





Contact

Franco Migliore
Agency Director
Enquiries@hnfproperty.com
0208 769 0161

HNF Property for themselves and for the vendors or lessors of this property whose agents they are give notice that: the particulars are produced in good faith, are set out as a general guide only and do not constitute any part of a contract. no person in the employment of HNF Property has any authority to make or give any representative warranty whatever in relation to this property.

**Viewings by prior arrangement.
Call 0208 769 0161**